

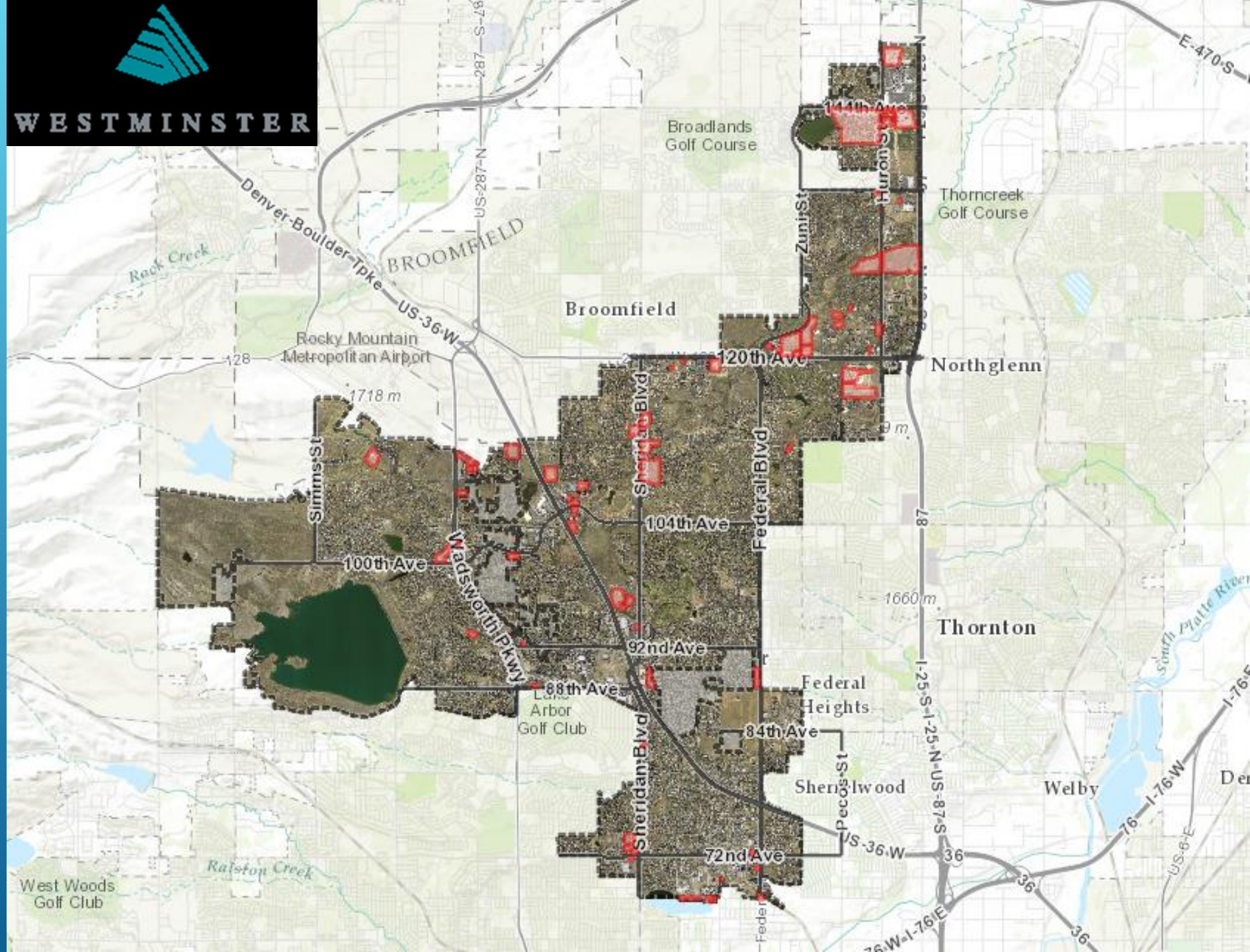


Westminster
City Hall
4800 W. 92nd Avenue
Public Safety
Center

Welcome to the City of Westminster



- Incorporated in 1911
- Encompasses 34 Square Miles
- Resides in 2 Counties- Adams & Jefferson
- Population-108,000





Streets-1,116 Lane Miles

Striping & Pavement Markings
650,000 Sq. Feet of Lane Lines
80,000 Sq. Feet of Markings



Curb, Gutter & Sidewalk-
760 Miles, 8,000 ADA Ramps

STREET OPERATIONS ASSETS



Street Signs-17,000



Storm Water System- 2,075 Inlets
183 Miles of Storm Sewer

STREET OPERATIONS ASSETS



Street Lights-7,716
198 City Owned



Railings & Architectural Fencing
44 Locations,
12 Bridges over State Highways

STREET OPERATIONS ASSETS

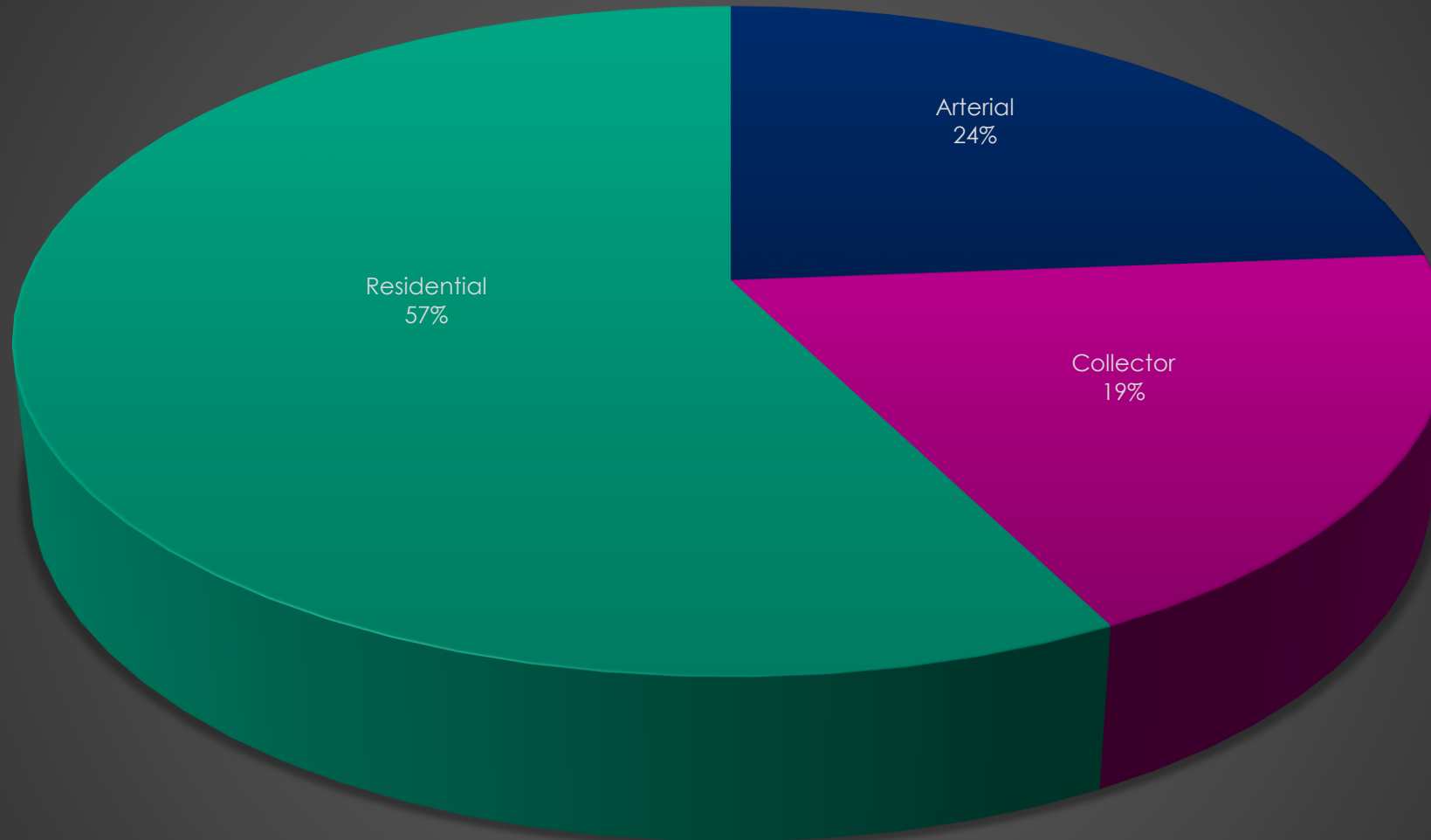


City Facility Parking Lots

- 67 Sites
- 100 Pavement Sections
- 55 Lane Miles
- 26 Miles of Curb & Gutter

STREET OPERATIONS ASSETS

Lane Miles By Street Classification

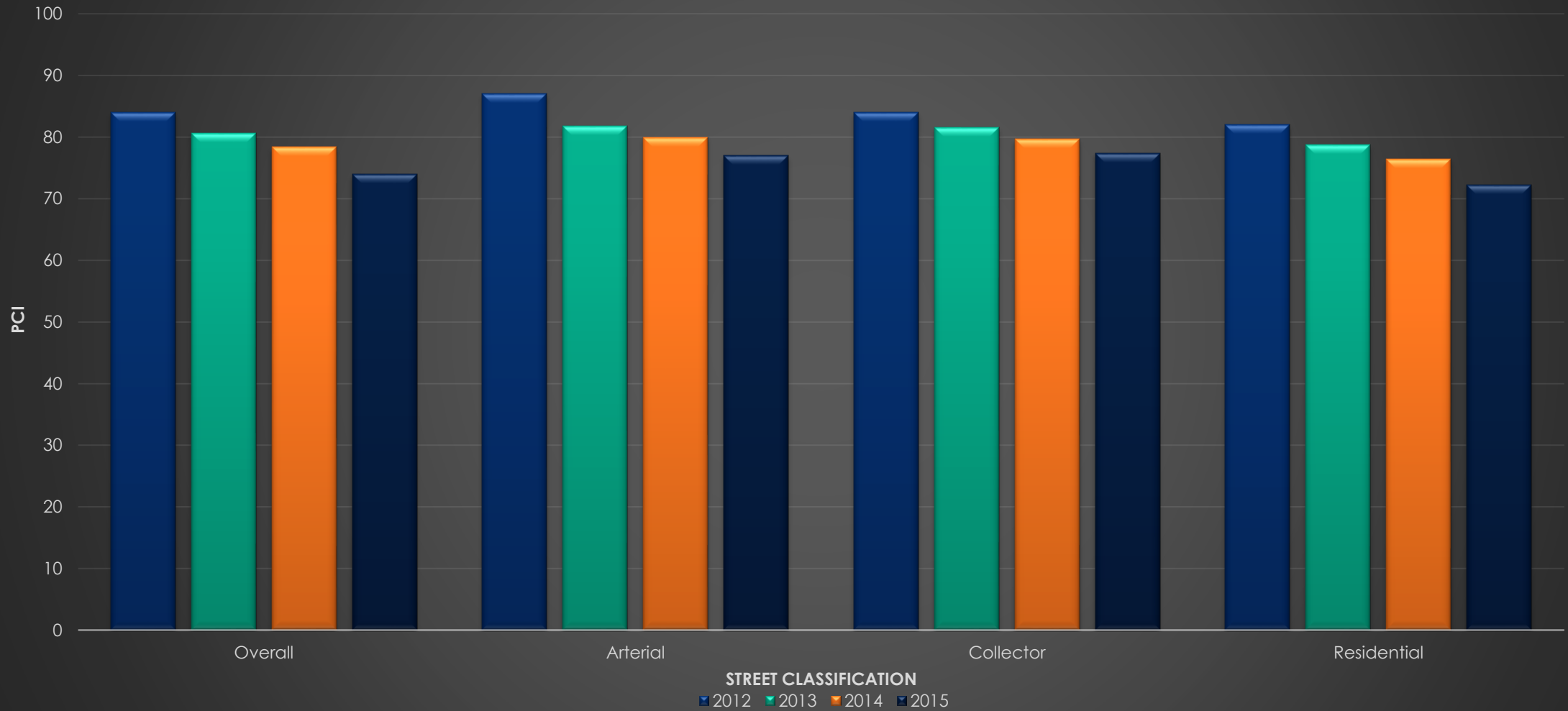


Arterial Collector Residential

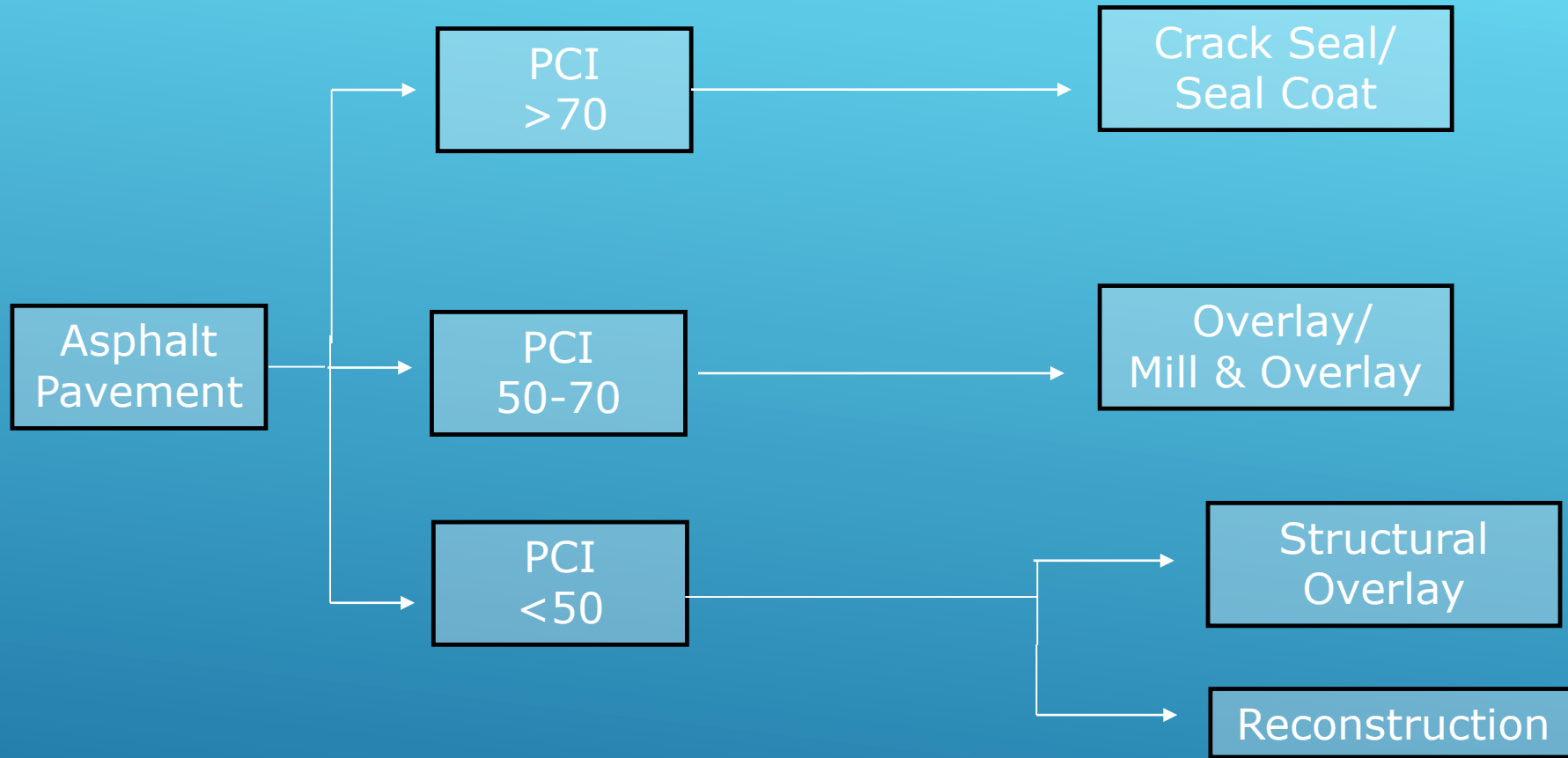
- ▶ Maintain a Network Average of 75 PCI
- ▶ Maintain 65% of All Roadways at 70 PCI or Greater
- ▶ Resurface Arterial & Collector Roadways Every 10 Years
- ▶ Resurface Residential Roadways Every 12 Years
- ▶ Crack Seal, Crack Seal, Crack Seal

PAVEMENT MAINTENANCE GOALS

City of Westminster PCI 2012-2015

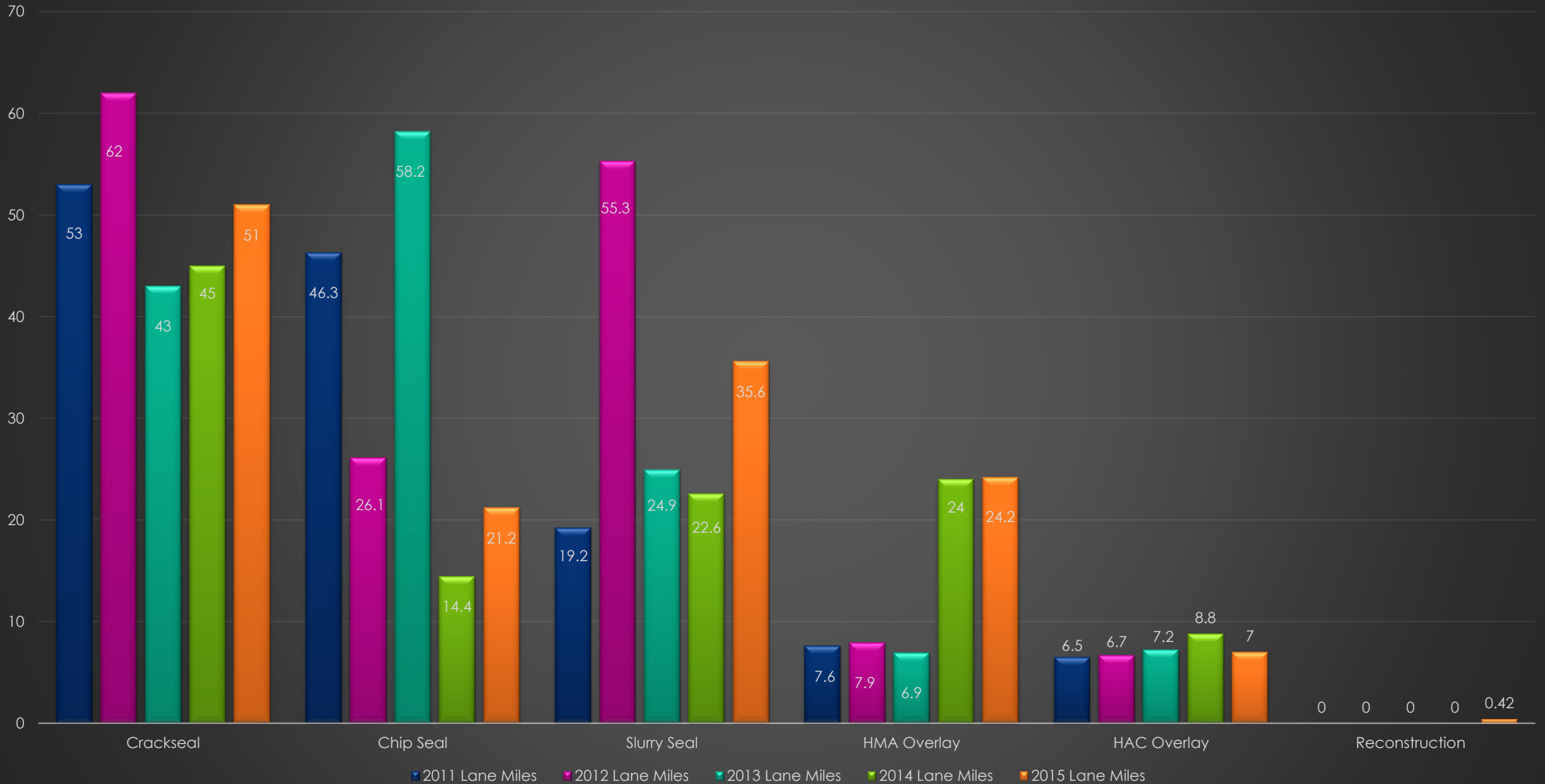


STREET CONDITION ASSESSMENT

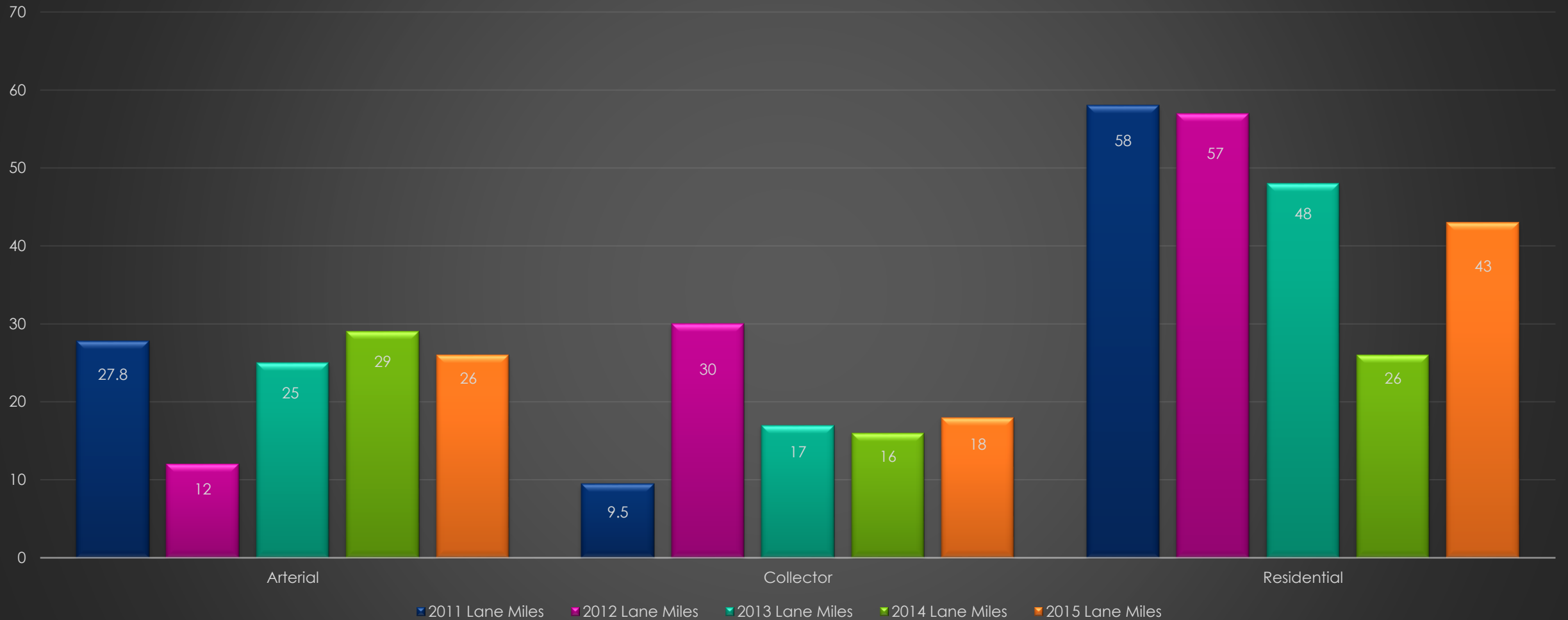


PREVENTATIVE MAINTENANCE & REHAB DECISION TREE

2011-2015 Lane Mile Totals By Rehab Strategy



2011-2015 Lane Miles Maintained By Street Classification



Target Lane Mile Totals by Street Classification

Arterial	34 Lane Miles
Collector	20 Lane Miles
Residential	58 Lane Miles

- ▶ HUTF & Vehicle Reg.-\$4,741,740
- ▶ Adams County Road Tax- \$1,337,250
- ▶ Infrastructure Fee- \$2,237,183
- ▶ Street Cut Impact Fee- \$313,000
- ▶ Sales Tax- \$1,185,122

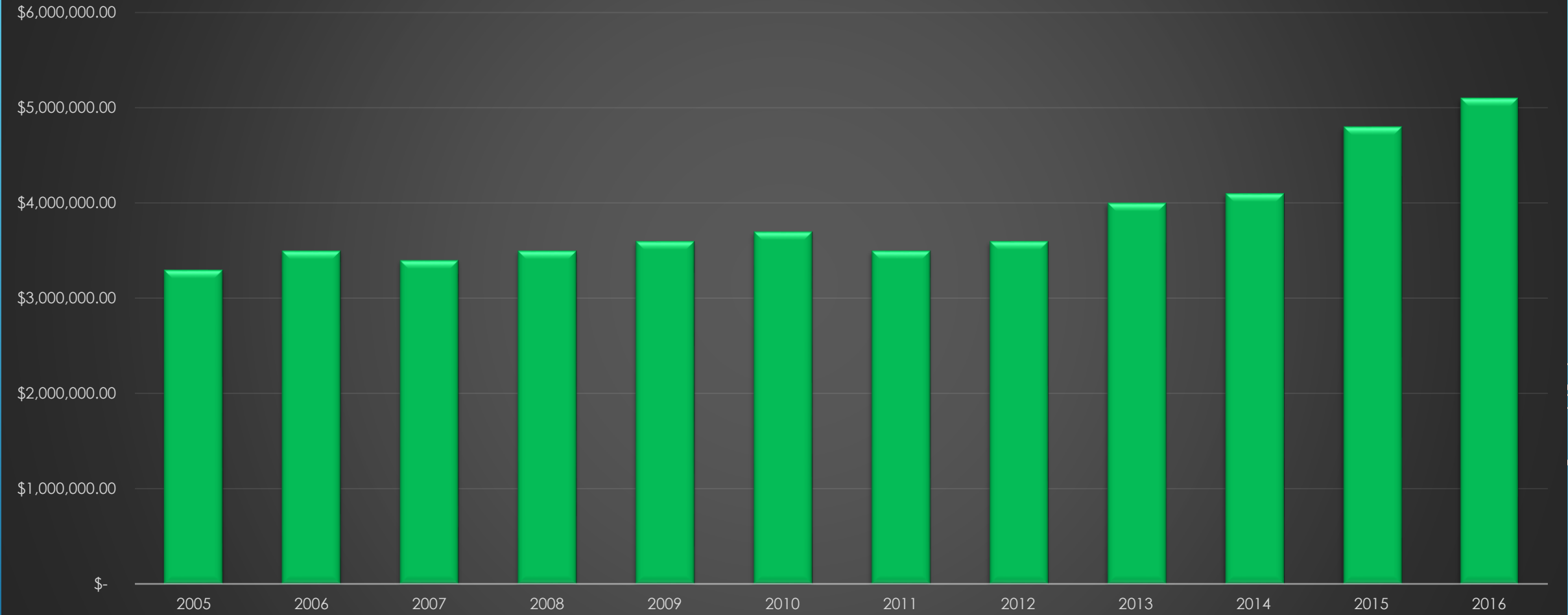
Grand Total- \$9,814,295

STREET MAINTENANCE FUNDING SOURCES

- ▶ Personnel- \$1,475,987
- ▶ Street Lights- \$2,262,938
- ▶ Snow Removal- \$335,784
- ▶ Street Signs- \$459,722
- ▶ **Street Maintenance & Rehabilitation - \$4,790,000**

STREET MAINTENANCE EXPENSES

2005-2016 Street Maintenance & Rehab Funding



FUNDING HISTORY

 N Independence DR
9600 W

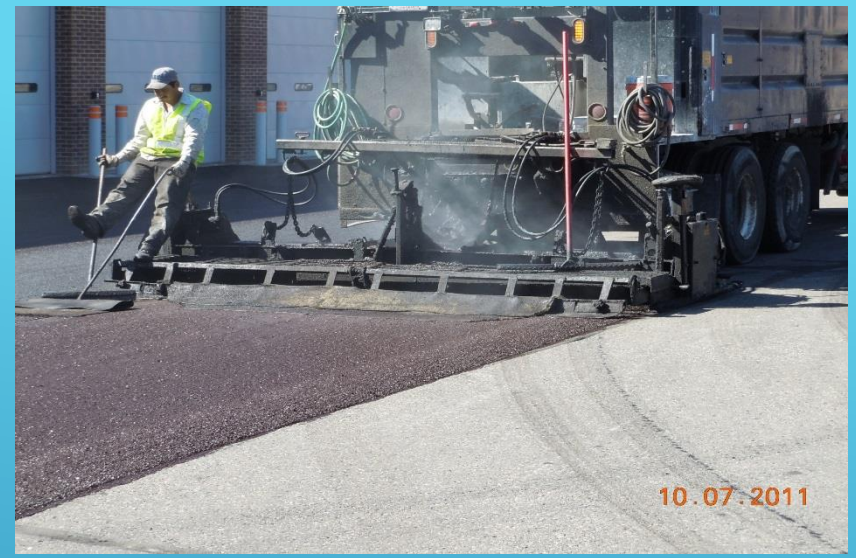


Hot Chip

 N Simms ST
11600 W



Crack Seal



Slurry Seal

Pavement Preservation

SUCCESSSES



Chip Seal



Hot-In-Place Recycling



City Street Operation Crews



MORE SUCCESSES





High Edges



Roadway Preparation

Micro Surfacing



NOT SO SUCCESSFUL



Bike Lanes
Retro-Fit 130 Miles by 2030



Concrete Replacement and
ADA requirements

FUTURE CHALLENGES

CURRENT MAJOR DEVELOPMENTS

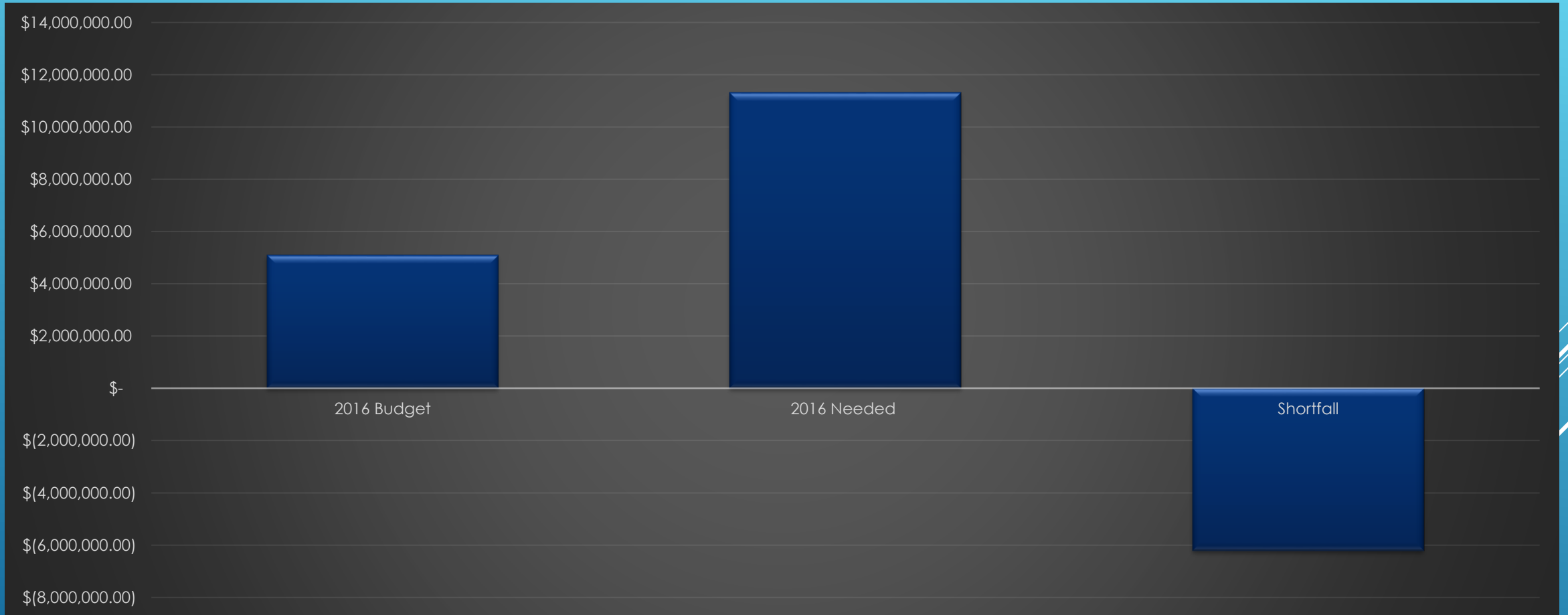
Commuter Rail 71st & Irving Street



Downtown Westminster



► Closing the Funding Gap for Street Maintenance



THE BIGGEST CHALLENGE

QUESTIONS?

